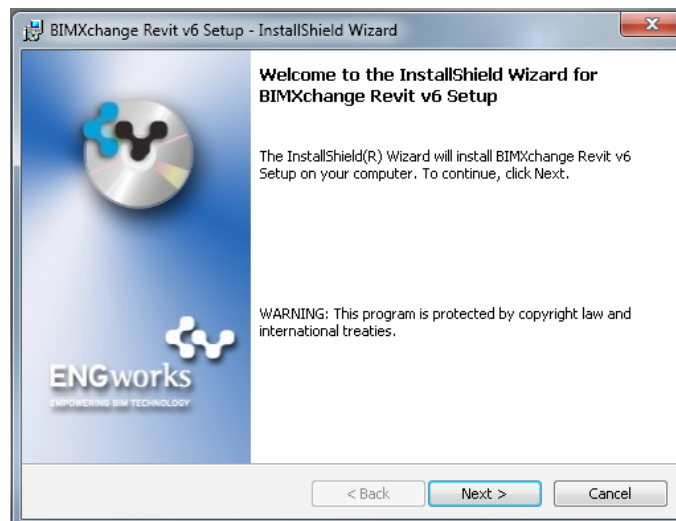
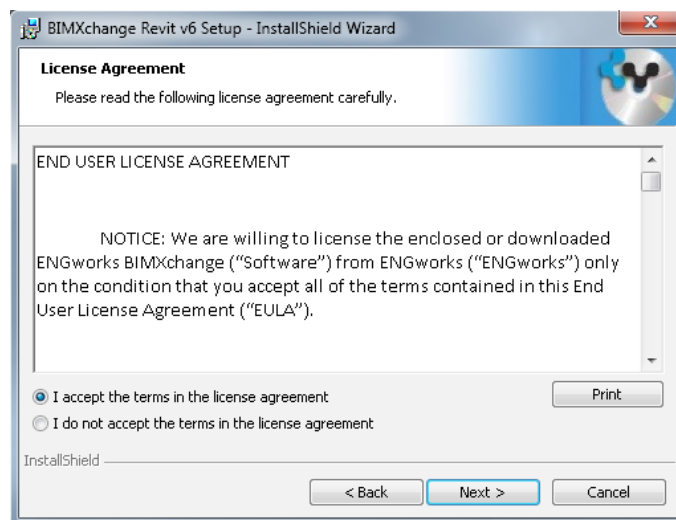


BIMXchange v6.0 Software Installation Instructions

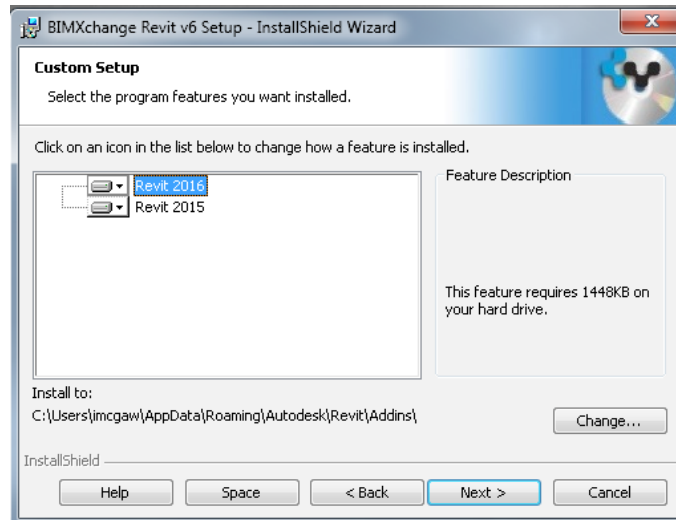
1. Once the Installer is downloaded double-click BIMXchange_v6_Setup.exe to run the setup.
2. Click Next.



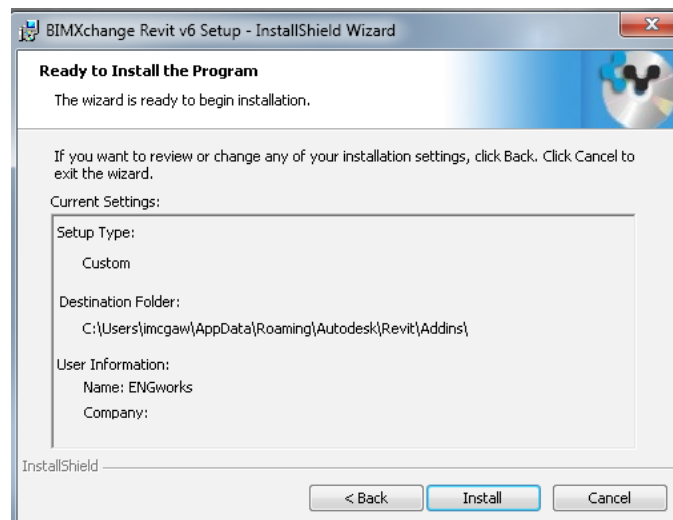
3. Read and accept the EULA, then press Next.



4. Select or Deselect which versions of the BIMXchange you wish to install.

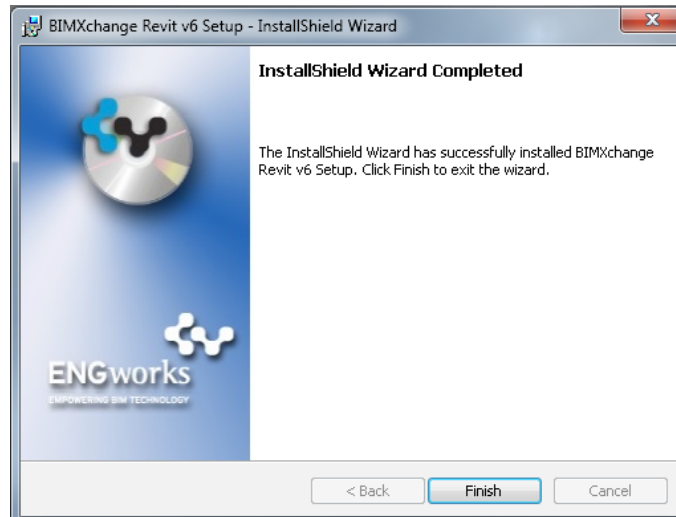


5. Review the Installation Settings.



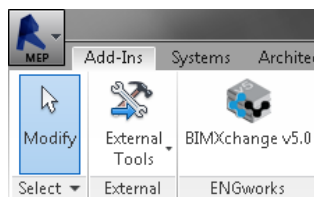
6. Select Install.

7. Click Finish to complete the installation.

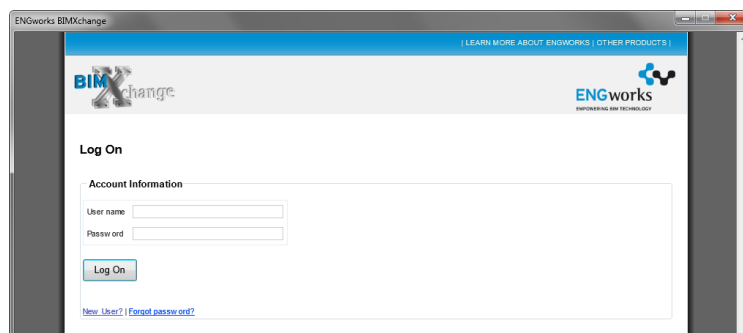


Start and Register the BIMXchange:

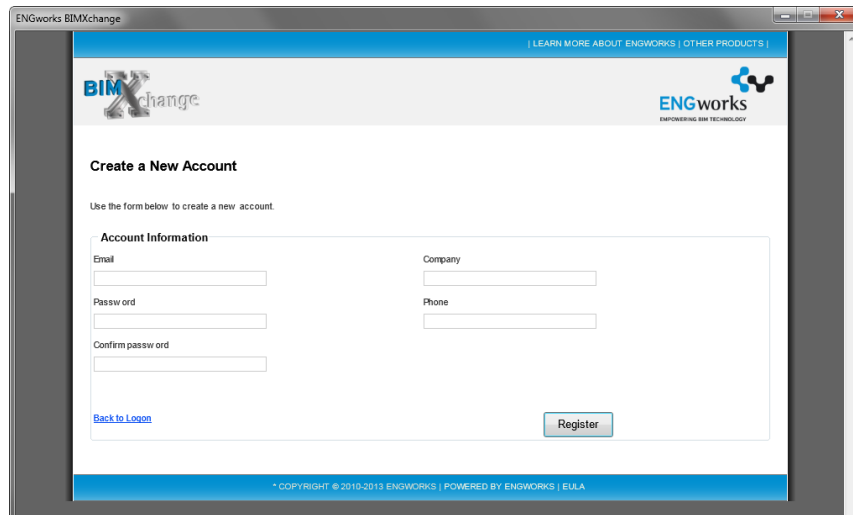
1. Open a new or existing project in Revit.



2. Select the Add-Ins Tab on the ENGworks panel and select the BIMXchange v6.0 button.
3. Select New User? on the initial Login page.

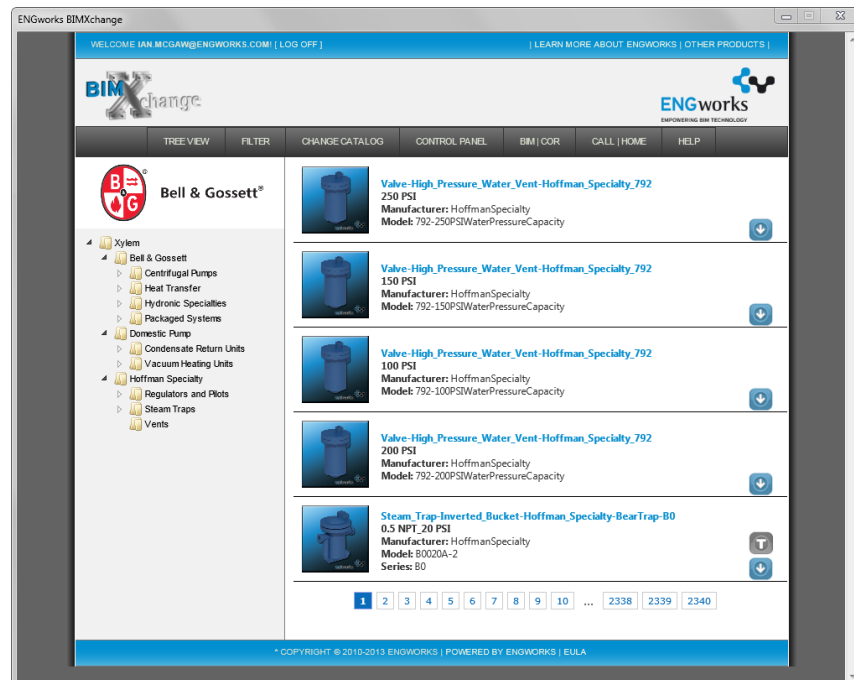


- The BIMXchange settings window appears. Input a valid email address, password, company (or student), & phone number. Then select Register.



The screenshot shows a web browser window titled "ENGworks BIMXchange". The page header includes the BIMXchange logo and the ENGworks logo with the tagline "EMPOWERING BIM TECHNOLOGY". The main heading is "Create a New Account". Below this, it says "Use the form below to create a new account." The form is titled "Account Information" and contains the following fields: "Email", "Company", "Password", "Phone", and "Confirm password". There is a "Back to Login" link and a "Register" button. At the bottom of the page, it says "© COPYRIGHT © 2010-2013 ENGWORKS | POWERED BY ENGWORKS | EULA".

- If all directions are followed, the browser will appear similar as shown below:



The screenshot shows the user interface of the ENGworks BIMXchange application. The top navigation bar includes "WELCOME IAN.MCGAW@ENGWORKS.COM | [LOG OFF]" and "LEARN MORE ABOUT ENGWORKS | OTHER PRODUCTS". The main header features the BIMXchange logo and the ENGworks logo. Below the header is a navigation menu with options: "TREE VIEW", "FILTER", "CHANGE CATALOG", "CONTROL PANEL", "BIM | COR", "CALL | HOME", and "HELP". The main content area displays a list of products from Bell & Gossett. The products listed are:

- Valve-High_Pressure_Water_Vent-Hoffman_Specialty_792 250 PSI**
Manufacturer: HoffmanSpecialty
Model: 792-250PSIWaterPressureCapacity
- Valve-High_Pressure_Water_Vent-Hoffman_Specialty_792 150 PSI**
Manufacturer: HoffmanSpecialty
Model: 792-150PSIWaterPressureCapacity
- Valve-High_Pressure_Water_Vent-Hoffman_Specialty_792 100 PSI**
Manufacturer: HoffmanSpecialty
Model: 792-100PSIWaterPressureCapacity
- Valve-High_Pressure_Water_Vent-Hoffman_Specialty_792 200 PSI**
Manufacturer: HoffmanSpecialty
Model: 792-200PSIWaterPressureCapacity
- Steam_Trainverted_Bucket-Hoffman_Specialty-BearTrap-B0 0.5 NPT 20 PSI**
Manufacturer: HoffmanSpecialty
Model: B0020A-2
Series: B0

At the bottom of the product list, there is a pagination control showing "1 2 3 4 5 6 7 8 9 10 ... 2338 2339 2340". The footer of the page says "© COPYRIGHT © 2010-2013 ENGWORKS | POWERED BY ENGWORKS | EULA".