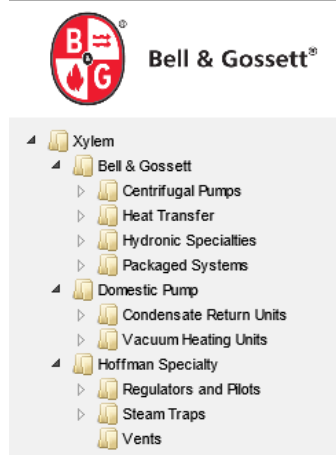
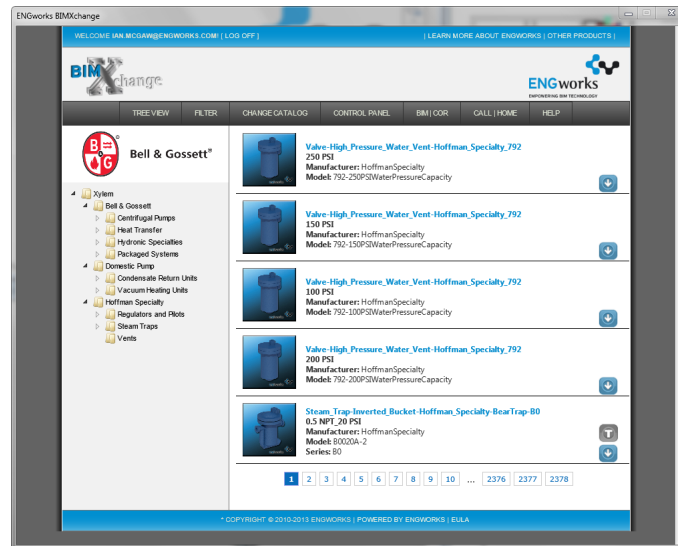


BIMXchange v6.0 Usage Instructions

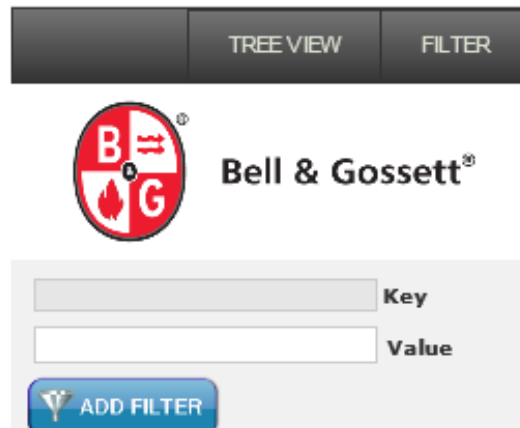
Navigate/Filter Revit Content

1. To navigate the content, expand the tree in the left pane.



2. To filter for content types, start by typing the key parameter which is desired to be searched and then enter a value in the associated box. Next select Add Filter

Note: This is a filter, meaning that if the user has selected an item in the tree the search will further search the selection set and not the entire library. To return to the main library select the highest tree node in the tree view structure.



The screenshot shows a user interface for filtering content. At the top, there are two tabs: "TREE VIEW" and "FILTER". Below the tabs is the Bell & Gossett logo and the text "Bell & Gossett®". Underneath, there are two input fields: "Key" and "Value". Below these fields is a blue button with a funnel icon and the text "ADD FILTER".

3. From the Navigation at the bottom of the center pane it is possible to page through the options that have been either selected in the tree or filtered for in the search.




To Change Libraries

1. To change between different libraries simply select the Change Catalog button next to the filter tab and in the Change Library pull-down choose the library desired.

Select Existing Library:

OR

Enter Code to Unlock New Library:



Download and Import Revit Content

1. Click the Load File button to add the Family Type to the Revit Project. This will add the family type to the cart.

Note: The title in blue in the middle panel is the family name; while the type name is directly beneath the family name. Be certain to select the correct family then select the correct type catalog button to find the required product instance.



BG-VSX_Double Suction Split Case Pump_VSH-10x12
VSH-10x12x10.5A_286T/TS Standard
Manufacturer: Bell&Gossett
Model: VSH-10x12x10.5A
Series: VSX



2. Click Show Type Catalog to view the Type Catalog of the family. The image below is a sample window of a Type Catalog. In this view it is possible to select multiple types by highlighting them. It is also possible to filter the selections based on options (Contains, StartsWith, etc).



BG-VSX_Double Suction Split Case Pump_VSH-10x12
VSH-10x12x10.5A_286T/TS Standard
Manufacturer: Bell&Gossett
Model: VSH-10x12x10.5A
Series: VSX



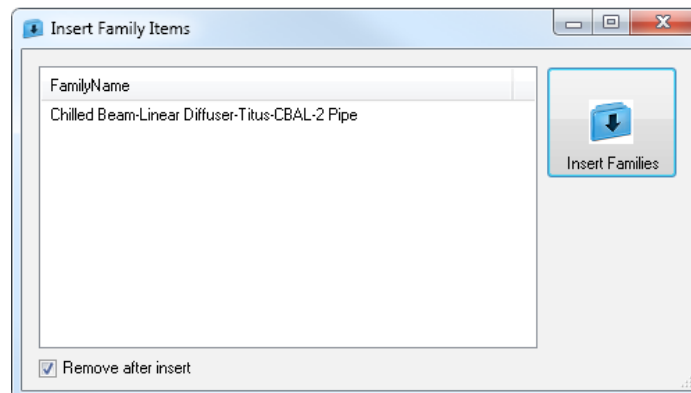
<< BACK

BG-VSX_Double Suction Split Case Pump_VSH-10x12 Type Catalog

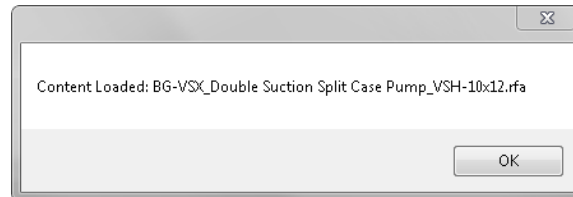
Type	Coupler Type	Motor Frame	HC	HB
VSH-10x12x10.5A_286T/TS Spacer	Spacer w th ANSI OSHA Guard	286T/TS	77.579	84
VSH-10x12x10.5A_286T/TS Standard	Standard w th ANSI OSHA Guard	286T/TS	66.329	73
VSH-10x12x10.5A_324T/TS Spacer	Spacer w th ANSI OSHA Guard	324T/TS	80.4	84
VSH-10x12x10.5A_324T/TS Standard	Standard w th ANSI OSHA Guard	324T/TS	69.15	73
VSH-10x12x10.5A_326T/TS Spacer	Spacer w th ANSI OSHA Guard	326T/TS	81.52	84
VSH-10x12x10.5A_326T/TS Standard	Standard w th ANSI OSHA Guard	326T/TS	70.27	73
VSH-10x12x10.5A_364T/TS Spacer	Spacer w th ANSI OSHA Guard	364T/TS	83.359	84
VSH-10x12x10.5A_364T/TS Standard	Standard w th ANSI OSHA Guard	364T/TS	72.109	73
VSH-10x12x10.5A_365T/TS Spacer	Spacer w th ANSI OSHA Guard	365T/TS	83.359	84
VSH-10x12x10.5A_365T/TS Standard	Standard w th ANSI OSHA Guard	365T/TS	72.109	73
VSH-10x12x10.5A_404T/TS Spacer	Spacer w th ANSI OSHA Guard	404T/TS	85.96	84

Page 1 of 3 Displaying 1 to 50 of 102 items

3. To add the selected families and types into a project, select the Load File button. This will add the Family Type to the Cart to be downloaded.
4. Next Close the BIMXchange.
5. From the Add-Ins tab select the Insert Items button. This will bring up a dialog box that allows you to download the families types that have been added to your cart.



6. The message below appears on-screen once the loading is complete:



7. To verify that the content was imported into the Revit project, expand the Families category from the Project Browser. Under the Mechanical Equipment category the previously selected ENGworks content can be found.

