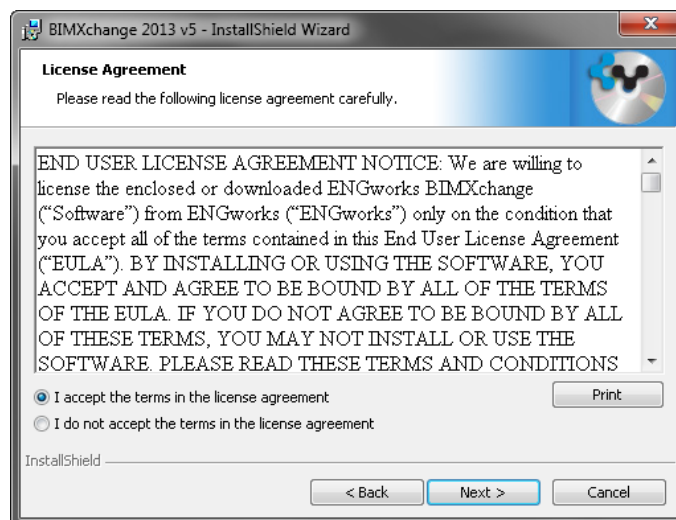


BIMXchange v5.0 Software Installation Instructions

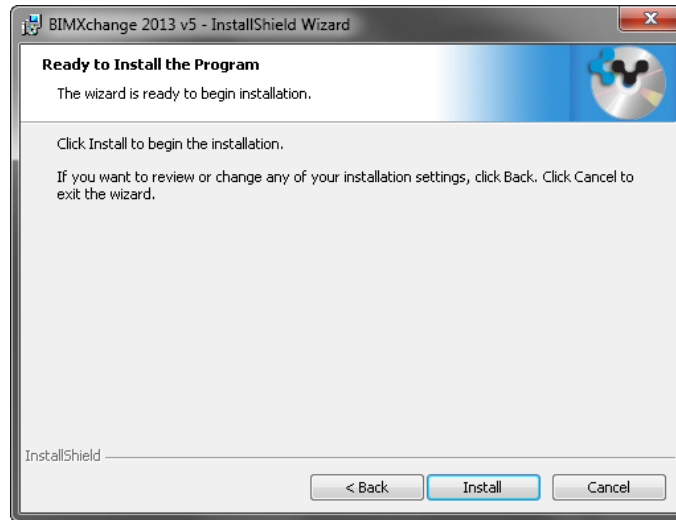
1. Once the Installer is downloaded double-click BIMXchange_2012_v5_Setup.exe or BIMXchange_2013_v5_Setup.exe or BIMXchange_2014_v5_Setup.exe to run the setup.
2. Click Next.



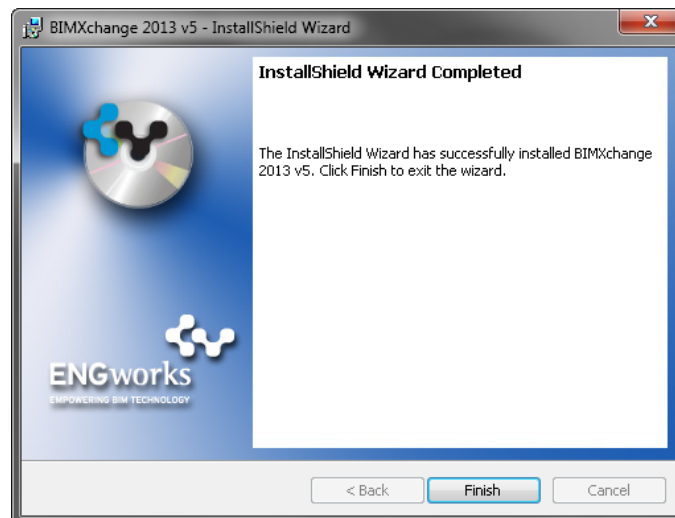
3. Read and accept the EULA, then press Next.



4. Click Install

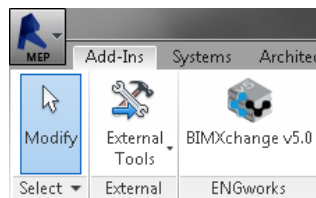


5. Click Finish to complete the installation.

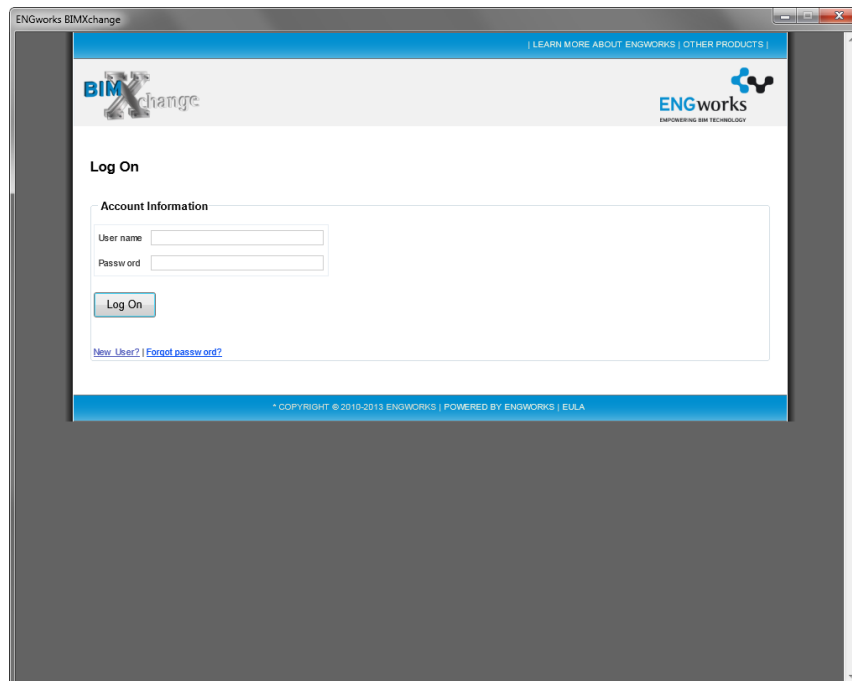


Start and Register the BIMXchange:

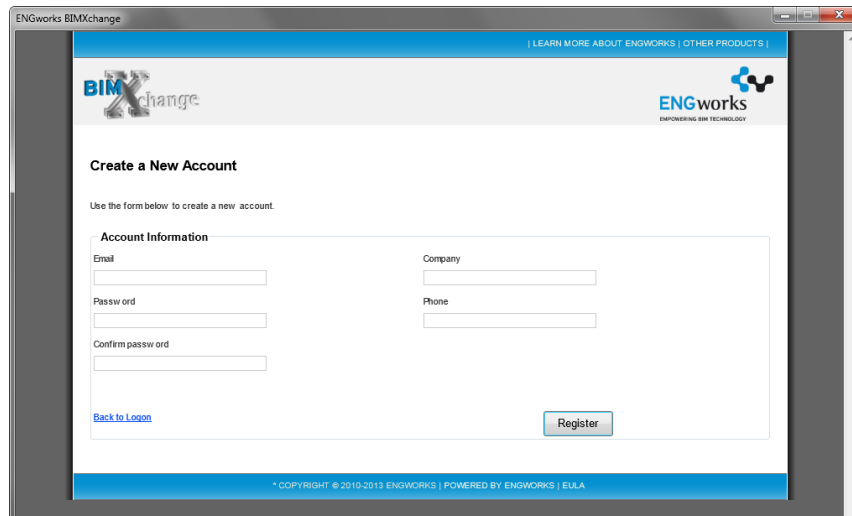
1. Open a new or existing project in Revit.
2. Select the Add-Ins Tab on the ENGworks panel and select the BIMXchange v5.0 button.



3. Select New User? on the initial Login page.



- The BIMXchange settings window appears. Input a valid email address, password, company (or student), & phone number. Then select Register.

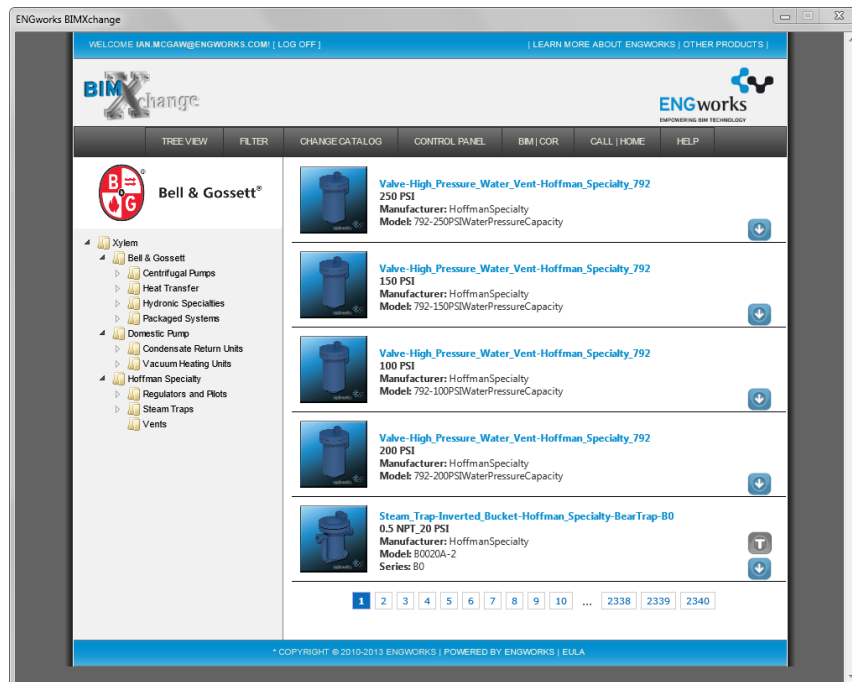


The screenshot shows a web browser window titled 'ENGworks BIMXchange'. The page header includes the BIMXchange and ENGworks logos, along with navigation links: '| LEARN MORE ABOUT ENGWORKS | OTHER PRODUCTS |'. The main heading is 'Create a New Account'. Below it, a sub-heading reads 'Use the form below to create a new account.' The form is titled 'Account Information' and contains the following fields:

- Email
- Password
- Confirm password
- Company
- Phone

At the bottom left of the form is a link for 'Back to Login', and at the bottom right is a 'Register' button. The footer of the page contains the text: '* COPYRIGHT © 2010-2013 ENGWORKS | POWERED BY ENGWORKS | EULA'.

- If all directions are followed, the browser will appear similar as shown below:



The screenshot shows the product catalog page in the ENGworks BIMXchange application. The page header includes the BIMXchange and ENGworks logos, along with navigation links: '| LEARN MORE ABOUT ENGWORKS | OTHER PRODUCTS |'. The user is logged in as 'WELCOME IAN MCGAW@ENGWORKS.COM | [LOG OFF]'. The page features a navigation menu with options: 'TREE VIEW', 'FILTER', 'CHANGE CATALOG', 'CONTROL PANEL', 'BIM | GOR', 'CALL | HOME', and 'HELP'. The main content area displays a list of products from Bell & Gossett, categorized under 'Xylem'. The products listed are:

- Valve-High_Pressure_Water_Vent-Hoffman_Specialty_792 250 PSI
Manufacturer: HoffmanSpecialty
Model: 792-250PSIWaterPressureCapacity
- Valve-High_Pressure_Water_Vent-Hoffman_Specialty_792 150 PSI
Manufacturer: HoffmanSpecialty
Model: 792-150PSIWaterPressureCapacity
- Valve-High_Pressure_Water_Vent-Hoffman_Specialty_792 100 PSI
Manufacturer: HoffmanSpecialty
Model: 792-100PSIWaterPressureCapacity
- Valve-High_Pressure_Water_Vent-Hoffman_Specialty_792 200 PSI
Manufacturer: HoffmanSpecialty
Model: 792-200PSIWaterPressureCapacity
- Steam_Train-Inverted_Bucket-Hoffman_Specialty-BearTrap-B0 0.5 NPT 20 PSI
Manufacturer: HoffmanSpecialty
Model: B0020A-2
Series: B0

At the bottom of the product list is a pagination control showing page numbers 1 through 10, followed by an ellipsis and page numbers 2338, 2339, and 2340. The footer of the page contains the text: '* COPYRIGHT © 2010-2013 ENGWORKS | POWERED BY ENGWORKS | EULA'.